

## Dalry Parish Boundary Trust



By chance a third of our Trust's land has been found to be in Dalry parish. This is now proving to be serendipitous as the above Trust has helped with two modest grants for restoring the building above and the Water wheel. Having no other maintenance income, other than Admissions, we are extremely grateful.

## Education at the Mill



We have spent some rewarding time with primary classes this year. If you are involved in education as a teacher or parent and think your child would enjoy a visit, speak to us about it, or take a leaflet.

## Garnock Connections

There can be no more definitive set of historic buildings connected to the River Garnock than those of this Mill, which are historically linked to Kilwinning Abbey in the from thirteenth century.

The mills, stables, barns, byres and cottages still on the site, and restored by this Trust, have been used for rural industries for four centuries. They have been flour or meal mills, or at some periods as flax heckling, waulking or latterly for sawmills.



All of the above depended, as we still do, on the efficiency of the weir, the only remaining natural stone one on the Ayrshire river system. It's importance is to retain enough stored water to drive the Garnock's remaining water wheel.

This has been assessed as an important asset for environmental educational and is a much loved attraction for local visitors and tourists alike. The deep still water also provides a site for mallards, herons, dippers, kingfishers wagtails swifts and otters.

## DALGARVEN MILL



## THE LIVING PAST

THE MUSEUM OF AYRSHIRE  
COUNTRY LIFE AND  
COSTUME

NEWSLETTER 38  
SPRING / SUMMER  
2017

Scottish Charity SCO 22937



## Spring at last.



The wild flowers and shrubs this spring have been the best the writer has known in almost eighty years. The result is an abundance of maintenance required. You cannot have missed the heavy pruning around the car park, we promise it will revive, in the meantime we will be able to get two coaches in if we wish to.

## Georgian and Early Victorian Costume 1800 - 1865



In the last year several gifts of Georgian and Regency clothing have been added to the Collection, so we have divided the large Victorian displays into two halves, this is the first from 1817 to 1870.



Some modern clothes are on display in the upper gallery, courtesy of Glasgow Museums. We have however added a few pieces from our own considerable Collection.

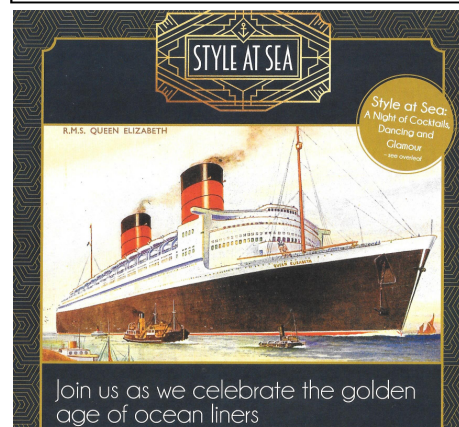


Some donations are surprisingly generous, a visitor casually asked if we ever need used or needed original illustrations, when we said yes we do, she said she had thirty or more framed examples if we would like them. They are being used to illustrate the present exhibition and the Curator's promised book on the Collection.



On the other hand, one lady simply wanted to know that her much loved Mrs Tittlemouse had a good home. See if you can spot her if you go round the Museum.

## Partnerships Style at sea



We are always delighted to offer pieces from any of our collections especially to other members of the North Ayrshire Museums Forum of which our Curator is the current Chairman. At the moment The Scottish Maritime Museum has a number of costumes and accessories from the Twenties and Thirties on display as part of their exhibition "Style at Sea" which will be available until September, so please add it to your list of things to see in North Ayrshire

Items from this exhibition will be coming here in October and this will allow us to build an exhibition on the theme but largely featuring many other stunning thirties costumes from the collection



## The Portal and Townhouse

The new cultural parts of the above have begun with a Golf exhibition, we were pleased to lend them golfing clothes, shoes and a bag and clubs from the nineteen twenties.

Hopefully some of the visitors to the Scottish Open Golf Championships may visit there and perhaps be lured to the Mill.

